

BYSS.1

Series DC Isolator Switches

Welcome to our website for more information:
www.zjbeny.com



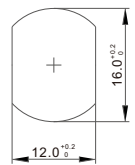
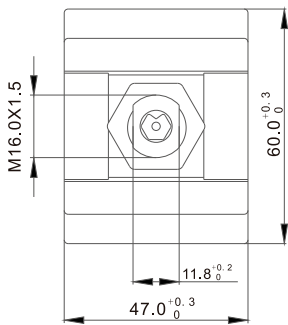
BYSS.1 Series DC Isolator Switches



IEC/EN 60947-3:2015

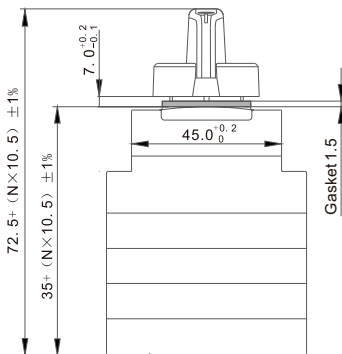
- 1 Brand
- 2 Type
- 3 OFF
- 4 Application
- 5 Insulation voltage
- 6 Rated impulse withstand voltage
- 7 Rated Current
- 8 ON
- 9 Knob

Dimensions(mm)



PANEL CUTOUT

BYSS.1-X



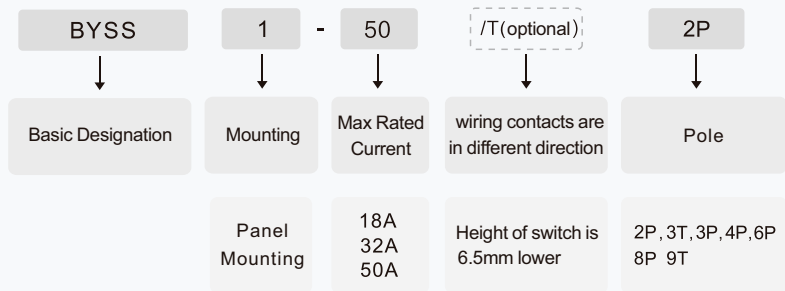
Application

ZBENY BYSS Series DC disconnect switch is used in 1-200KW solar inverter, 2P for 1 load up to 1000V 50A or 1500V 16A. low temperature rising, long worklife and short arcing time. For Multiple independent MPPTs.

Appearance Introduction



Type Instruction



Parameter

Electrical Characteristics

Rated Working Voltage	Ue	Details in diagram
Rated Current	Ie	Details in diagram
Conventional free air thermal current	Ith	50A
Rated impulse withstand voltage	Uimp	8kV
Rated short-time withstand current(1s)	Icw	1.5kA
Rated short-circuit making capacity	Icm	2.0kA
Rated conditional short-circuit current(kA)		8kA

Installation Environment

Utilization category DC	DC-21B, DC-PV2	
Number of cycles of operation(with current)	300	
Number of cycles of operation(without current)	10000	
Pole	2/3/4/6/8/9	
Mounting	Panel Mounting	
Tightening torque terminal screws M4, min.-max.	1.2Nm	1.8Nm
Tightening torque panel mounting nut, min.-max.	3.0Nm	3.5Nm
Ambient temperature allowed between	-40°C~+85°C	
Storage temperature allowed between	-40°C~+85°C	
Relative Humidity	90%	
Pollution degree	2	
IP rating terminals	IP66	

Wiring Diagram

	Type	Contact Configuration					Poles in series	Number of Strings
			800V	1000V	1200V	1500V		
	BYSS.1-18-2P		25A	18A	15A		2	1
	BYSS.1-32-2P		40A	32A	25A			
	BYSS.1-50-2P		50A	50A	40A	16A	2	1
	BYSS.1-32-3P		25A	20A	16A		2	2
	BYSS.1-50-3P		32A	25A	20A		2	2
	BYSS.1-50-3T				50A	40A	3	1
	BYSS.1-18-4P		25A	18A	15A		2	2
	BYSS.1-32-4P		40A	32A	25A		2	2
	BYSS.1-50-4P		50A	50A	40A	16A	2	2
	BYSS.1-18-6P		25A	18A	15A		2	3
	BYSS.1-32-6P		40A	32A	25A		2	3
	BYSS.1-50-6P		50A	50A	40A	16A	2	3
	BYSS.1-50-6T				50A	40A	3	2
	BYSS.1-18-8P		25A	18A	15A		2	4
	BYSS.1-32-8P		40A	32A	25A		2	4
	BYSS.1-50-8P		50A	50A	40A	16A	2	4
	BYSS.1-50-9T				50A	40A	3	3

Switching Configurations

Type	2P	3P	3T	4P	6P	6T	8P	9T
Contacts Wiring diagram								
Switching example								